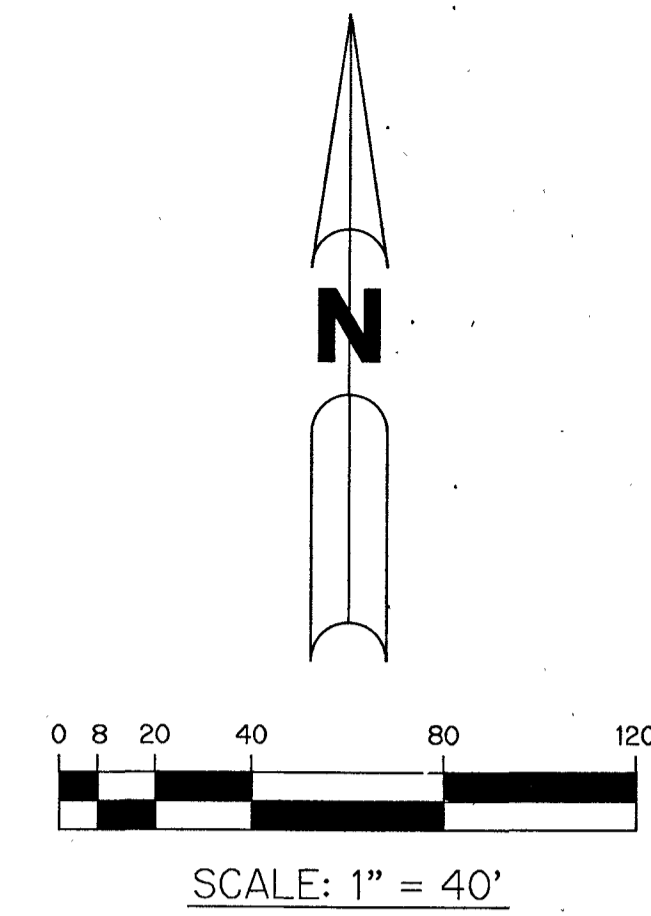


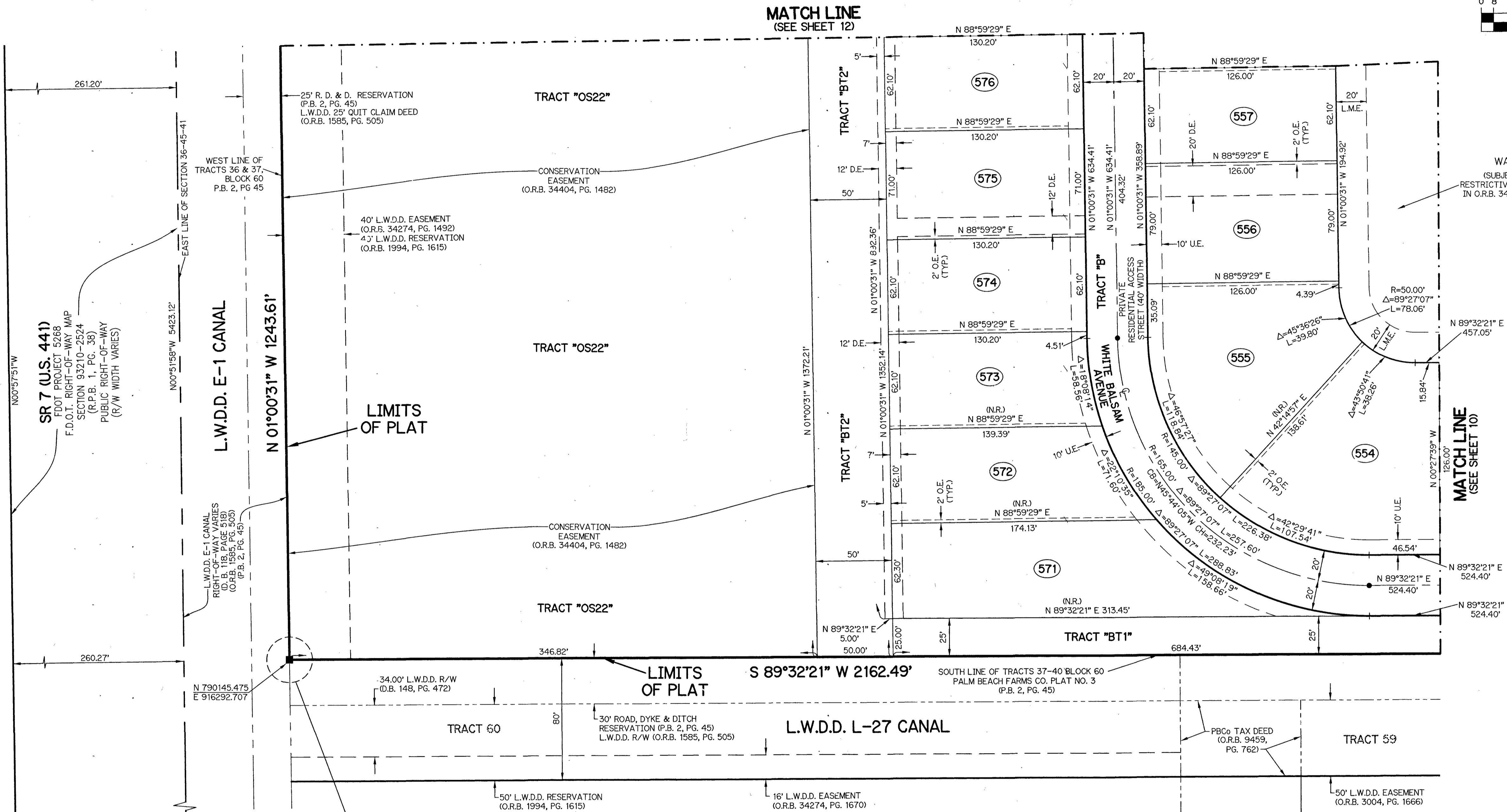
WHITWORTH AGR-PUD PLAT FOUR

BEING A REPLAT OF ALL OF TRACTS "L8" AND "OS10", WHITWORTH AGR-PUD PLAT ONE, AS RECORDED IN PLAT BOOK 133, PAGE 189; TOGETHER WITH A PORTION OF TRACTS 9 THROUGH 12, 13, 16, 33, 36 AND 40, ALL OF TRACTS 14, 15, 34, 35, 37, 38, 39 AND A PORTION OF ROAD, DYKE AND DITCH RESERVATIONS, BLOCK 60, PALM BEACH FARMS CO. PLAT NO. 3, AS RECORDED IN PLAT BOOK 2, PAGE 45, ALL OF THE PUBLIC RECORDS OF PALM BEACH COUNTY, FLORIDA AND LYING WITHIN SECTION 31, TOWNSHIP 45 SOUTH, RANGE 42 EAST

SHEET 11 OF 22



1110



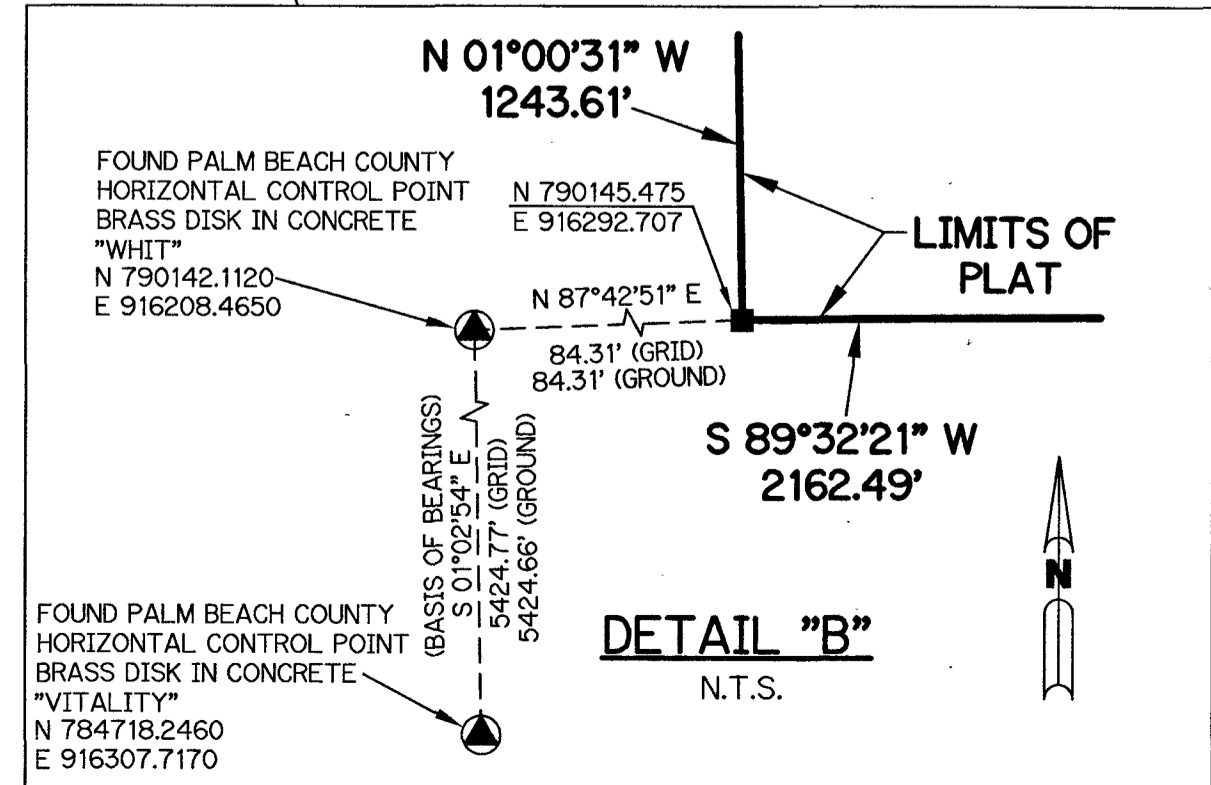
- LEGEND:**
- - SET PERMANENT REFERENCE MONUMENT 4"x4" CONCRETE MONUMENT WITH 1.5" DISK STAMPED PRM L.B. #7741
 - - FOUND PERMANENT REFERENCE MONUMENT 4"x4" CONCRETE MONUMENT WITH 1.5" DISK STAMPED PRM L.B. #7741
 - ▲ - SET PERMANENT REFERENCE MONUMENT 5/8" IRON ROD 1.5' IN LENGTH 1.4" CAP STAMPED PRM L.B. #7741
 - - SET PERMANENT CONTROL POINT NAIL WITH 1.25" DISK STAMPED L.B. #7741
 - - FOUND PERMANENT CONTROL POINT NAIL WITH 1.25" DISK STAMPED L.B. #7741
 - AGR - AGRICULTURAL
 - Δ - DELTA ANGLE
 - B.E. - BUFFER EASEMENT
 - BLK - BLOCK
 - CB - CHORD BEARING
 - CH - CHORD DISTANCE
 - ⊙ - CENTERLINE
 - D.B. - DEED BOOK
 - U.F. - PRIVATE DRAINAGE EASEMENT
 - F.P.L. - FLORIDA POWER & LIGHT
 - L - ARC LENGTH
 - L.A.E. - LIMITED ACCESS EASEMENT
 - LB - LICENSED BUSINESS
 - L.M.A.E. - LAKE MAINTENANCE EASEMENT
 - L.M.E. - LAKE MAINTENANCE EASEMENT
 - L.W.D.D. - LAKE WORTH DRAINAGE DISTRICT
 - N.R. - NOT RADIAL
 - N.R.T.R. - NOT RADIAL TO REAR LINE
 - N.T. - NON-TANGENT
 - N.T.S. - NOT TO SCALE
 - O.R.B. - OFFICIAL RECORD BOOK
 - O.E. - MAINTENANCE & ROOF OVERHANG EASEMENT
 - P.B.C.O. - PALM BEACH COUNTY
 - P.B.C.U.E. - PALM BEACH COUNTY UTILITY EASEMENT
 - P.B. - PLAT BOOK
 - P.C. - POINT OF CURVATURE
 - P.C.C. - POINT OF COMPOUND CURVATURE
 - P.C.P. - PERMANENT CONTROL POINT
 - P.D.E. - PUBLIC DRAINAGE EASEMENT
 - P.G. - PAGE
 - P.G.S. - PAGES
 - P.O.B. - POINT OF BEGINNING
 - P.N.R.I. - POINT OF NON-RADIAL INTERSECTION
 - P.N.T.I. - POINT OF NON-TANGENT INTERSECTION
 - P.O.C. - POINT OF COMMENCEMENT
 - P.O.I. - POINT OF INTERSECTION
 - P.R.C. - POINT OF REVERSE CURVATURE
 - P.R.I. - POINT OF RADIAL INTERSECTION
 - P.S.M. - PROFESSIONAL SURVEYOR AND MAPPER
 - P.T. - POINT OF TANGENCY
 - PUD - PLANNED UNIT DEVELOPMENT
 - R - RADIUS
 - RAD - RADIAL
 - R/W - RIGHT-OF-WAY
 - R.D. & D. - ROAD, DYKE AND DITCH RESERVATION
 - SIRC - SET 5/8" IRON ROD & CAP STAMPED "PRM LB7741"
 - SN&D - SET MAGNETIC NAIL & DISK STAMPED "PRM LB7741"
 - S.T. - SURVEY TIE
 - TYP. - TYPICAL
 - U.E. - UTILITY EASEMENT
 - N=780000.00 STATE PLANE COORDINATE VALUE
 - E=930000.00

SR 7 (U.S. 441) FOOT PROJECT 5288 F.D.O.T. RIGHT-OF-WAY MAP SECTION 93210-2524 (R.P.B. 1, PG. 38) PUBLIC RIGHT-OF-WAY (R/W WIDTH VARIES)

L.W.D.D. E-1 CANAL N 01°00'31" W 1243.61'

L.W.D.D. E-1 CANAL RIGHT-OF-WAY AREAS (O.R.B. 1585, PG. 303) (P.B. 2, PG. 45)

NO CORNER FOUND CALCULATED POSITION OF NE CORNER OF SECTION 01-46-41 N 787594.3210 E 916259.5920



BLOCK 60 PALM BEACH FARMS CO. PLAT NO. 3 (P.B. 2, PG. 45)

ETERNAL LIGHT MEMORIAL GARDENS P.B. 38, PG. 146

THIS INSTRUMENT WAS PREPARED BY PERRY C. WHITE, P.S.M. 4213, STATE OF FLORIDA SAND & HILLS SURVEYING, INC. 8461 LAKE WORTH ROAD, SUITE 410 LAKE WORTH, FLORIDA 33467 LB-7741

NOTES:

COORDINATES SHOWN ARE GRID COORDINATES DATUM = NAD 83 (1990 ADJUSTMENT) ZONE = FLORIDA EAST ZONE LINEAR UNIT = U.S. SURVEY FEET COORDINATE SYSTEM = 1983 STATE PLANE TRANSVERSE MERCATOR PROJECTION ALL DISTANCES ARE GROUND (UNLESS OTHERWISE NOTED) SCALE FACTOR = 1.00002026 PLAT BEARING = GRID BEARING GROUND DISTANCE X SCALE FACTOR = GRID DISTANCE

